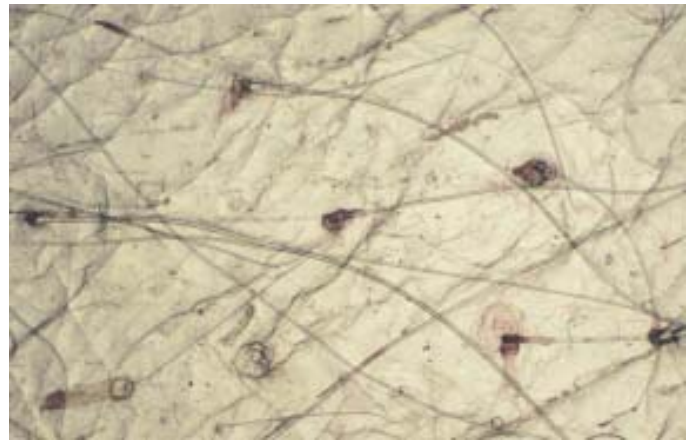
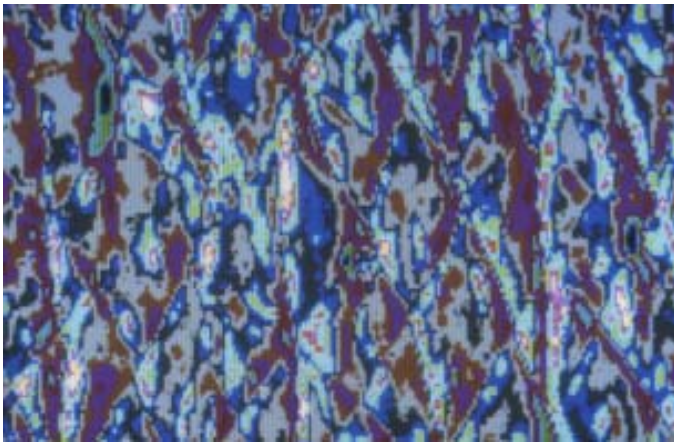


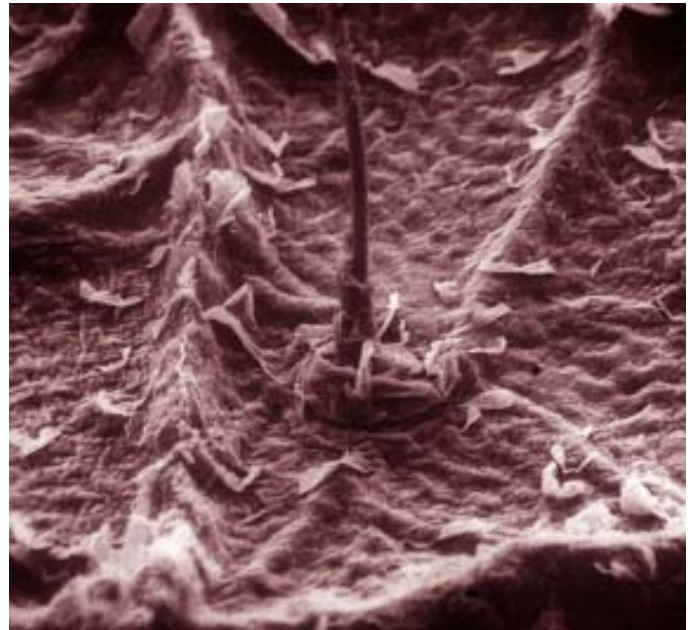
1. Sampling procedure



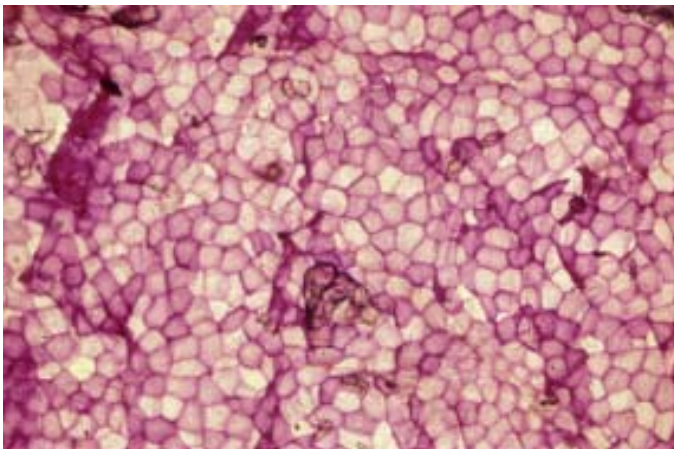
2. Normal stratum corneum



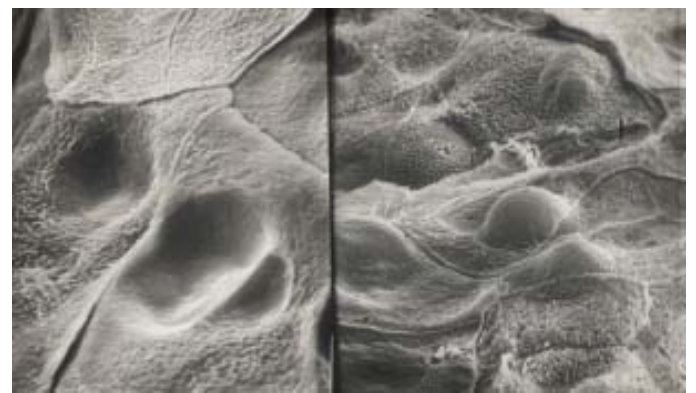
3. Digital image analysis of the microrelief of normal stratum corneum



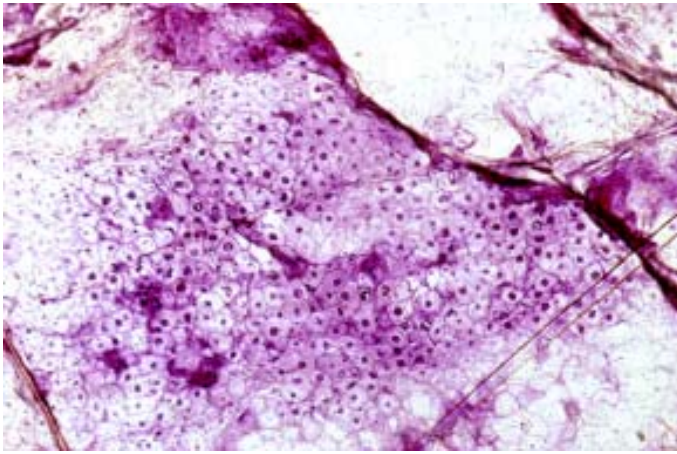
4. Scanning electron microscopy of normal stratum corneum



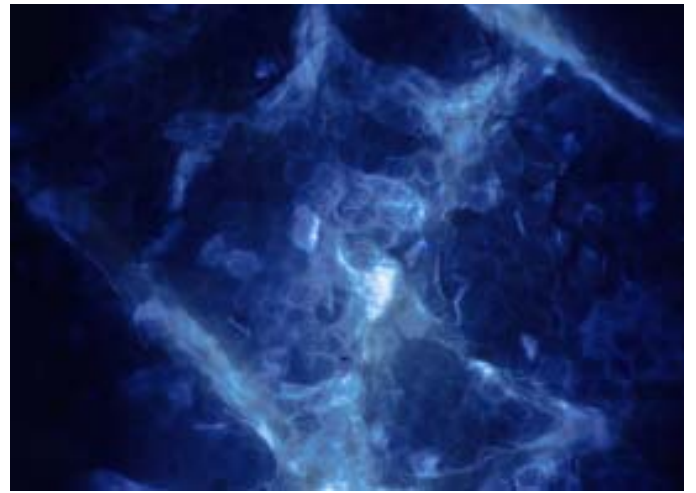
5. Normal corneocytes



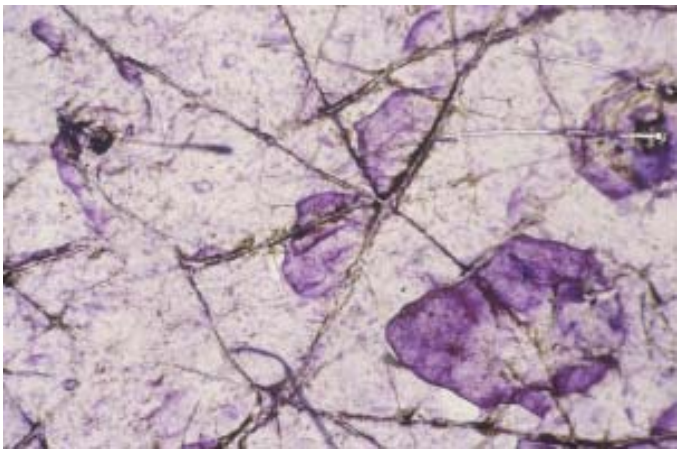
6. Parakeratosis



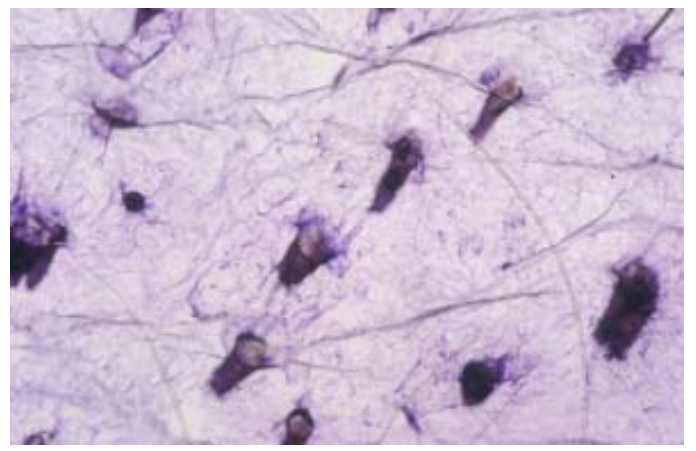
7. Scanning electron microscopy of parakeratotic cells



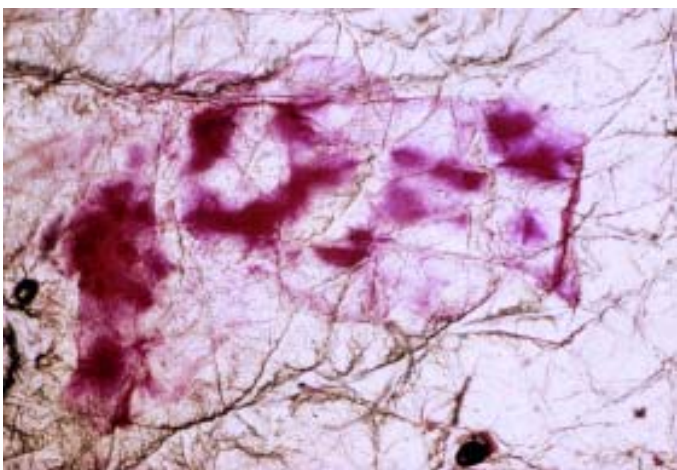
8. Immunostaining of corneocytes



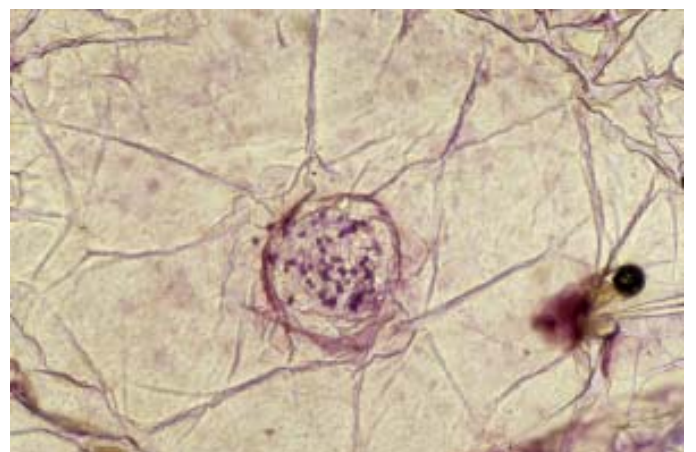
9. Xerosis



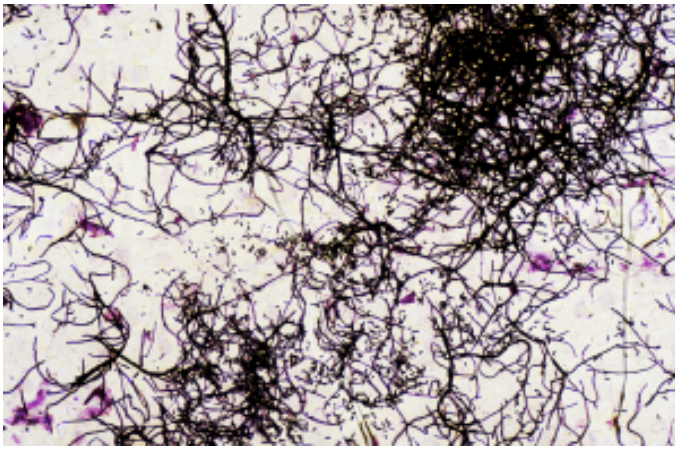
10. Microcomedones



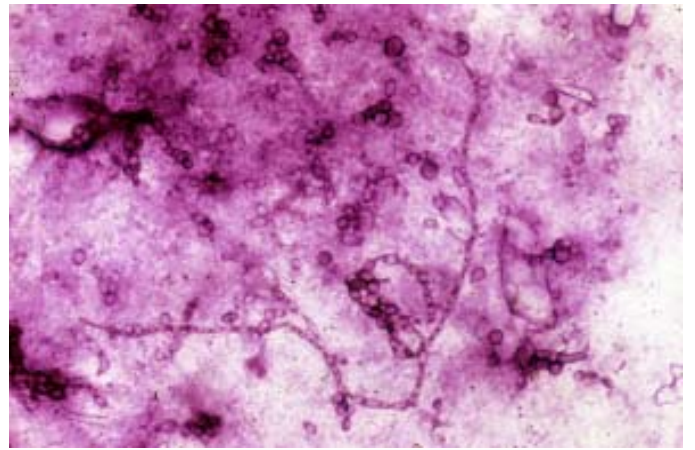
11. Spongiotic dermatitis



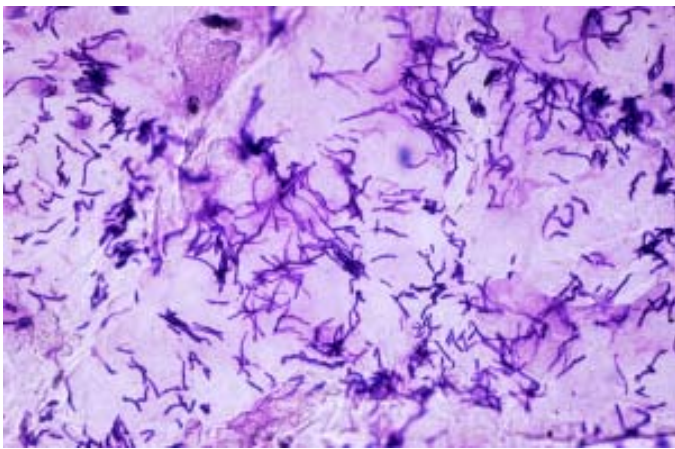
12. Molluscum contagiosum



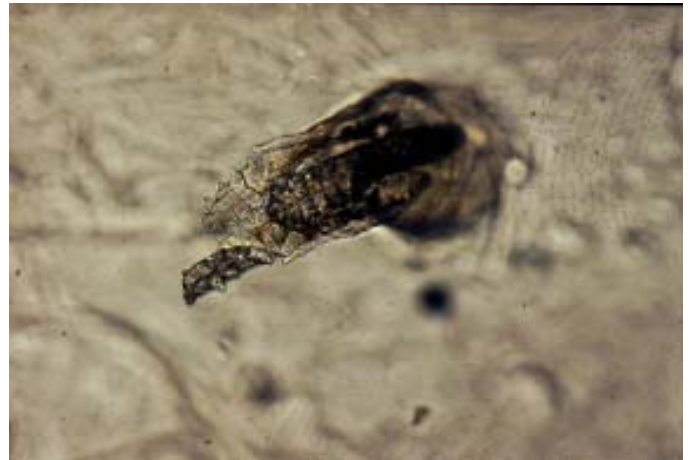
13. Dermatophytosis



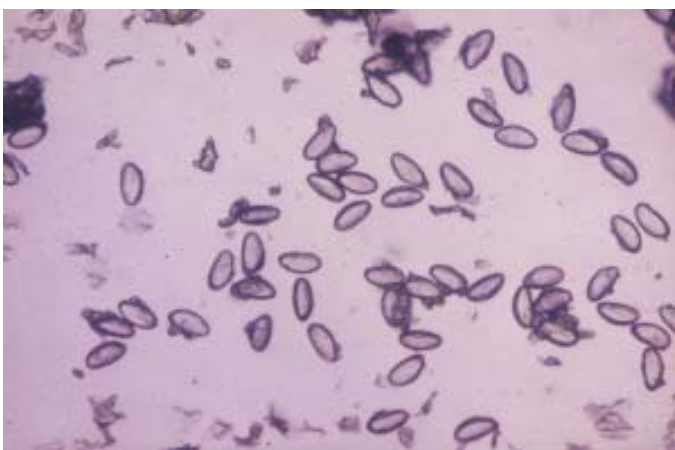
14. Candidosis



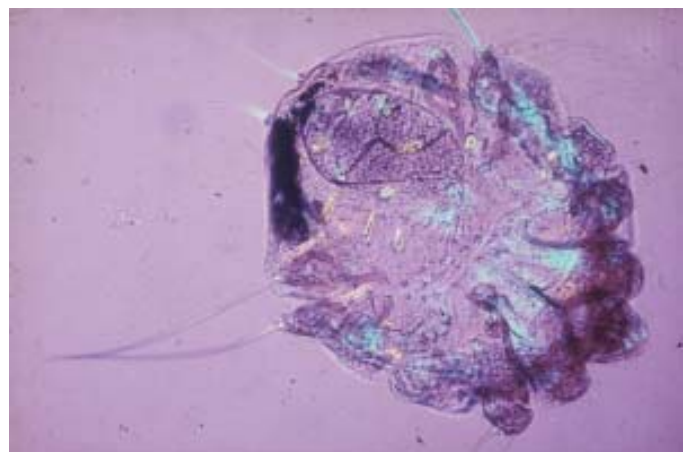
15. Pityriasis versicolor



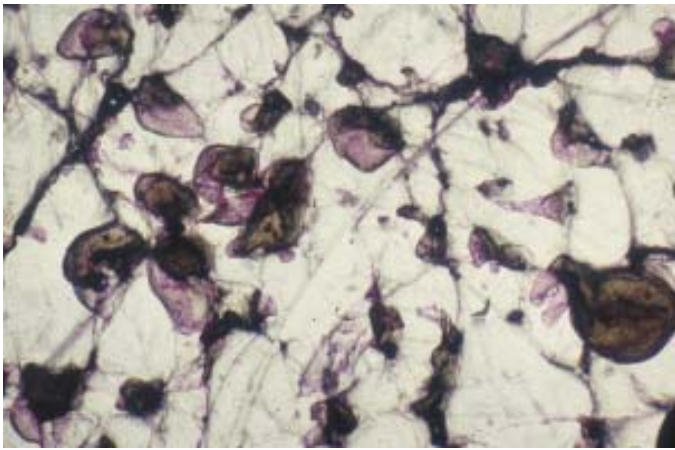
16. Demodex folliculorum



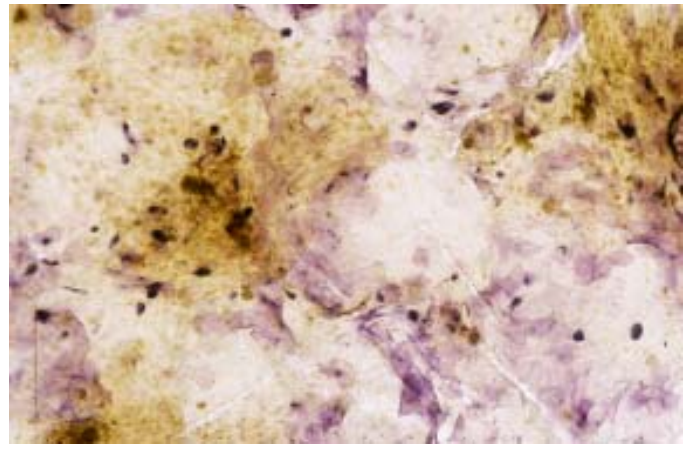
17. Oxyurosis eggs



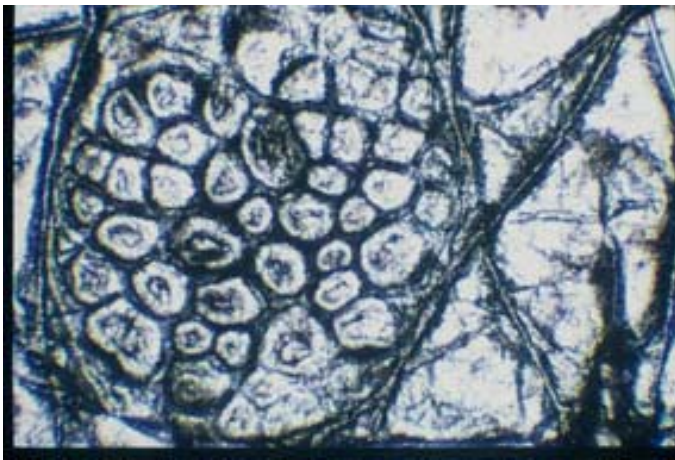
18. Scabies mite



19. Benign keratosis



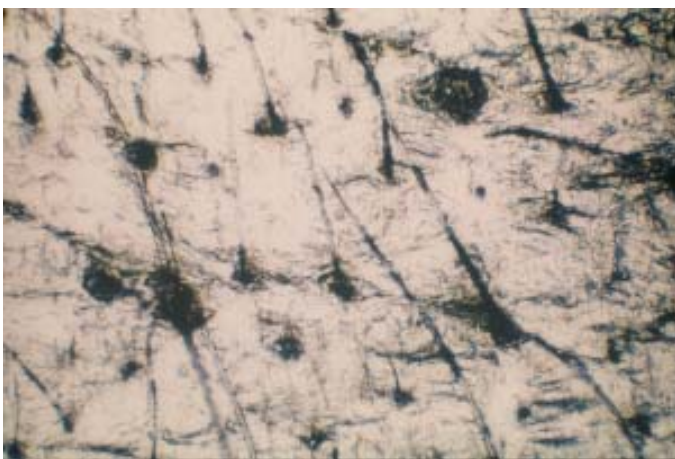
20. Malignant melanoma



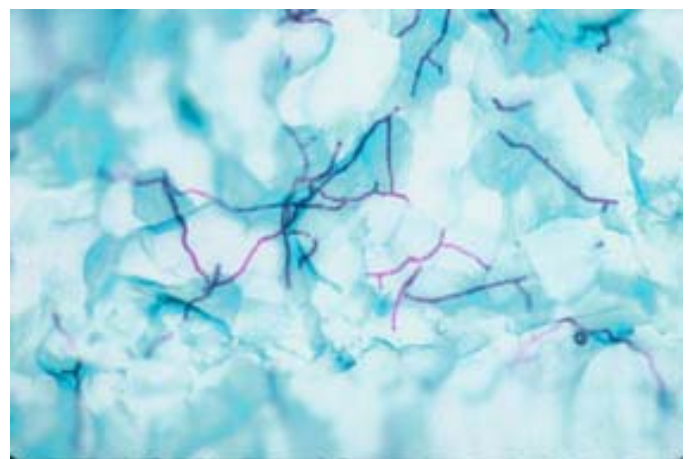
21. Small seborrheic wart on the back of the hand



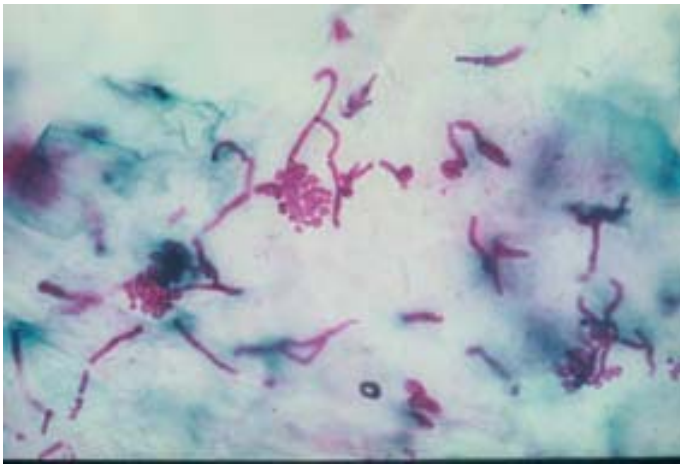
22. Scabies burrow, showing scabies mite



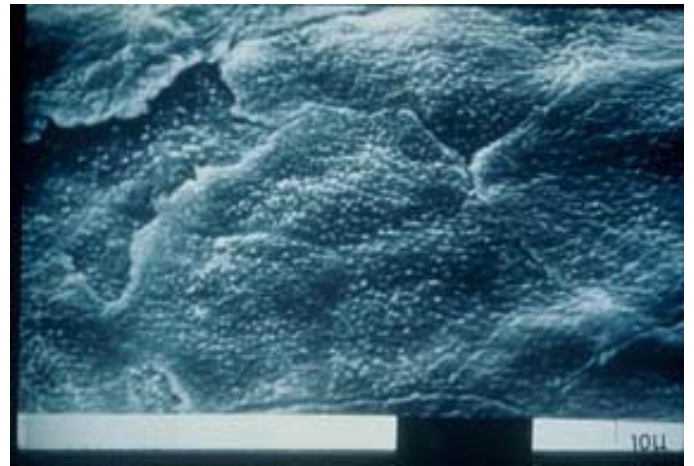
23. Forehead with vellus hairs “pulled through” the follicular canals



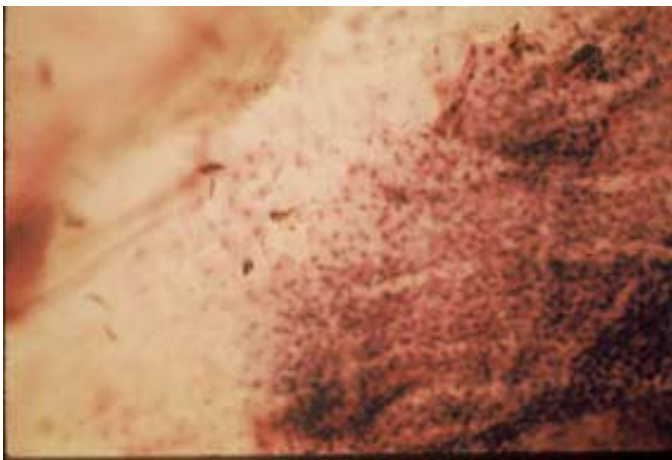
24. Ringworm in the groin stained by periodic schiff reagent showing fungal hyphae



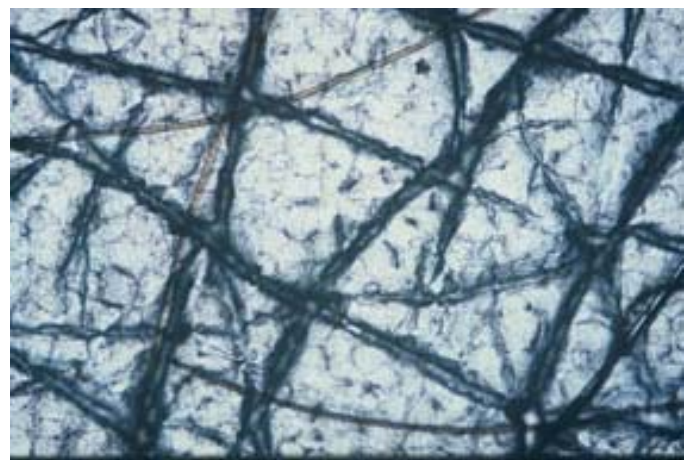
25. Pityriasis versicolor stained by periodic schiff reagent showing pseudohyphae and spores



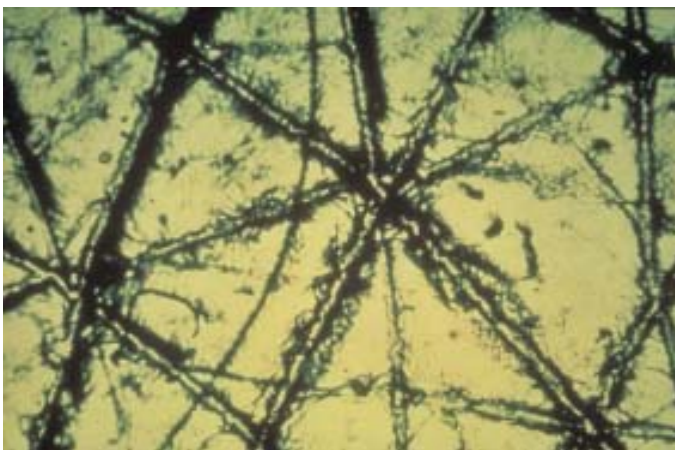
26. Scanning electron micrograph from lesion of psoriasis showing corneocytes with pseudovillae



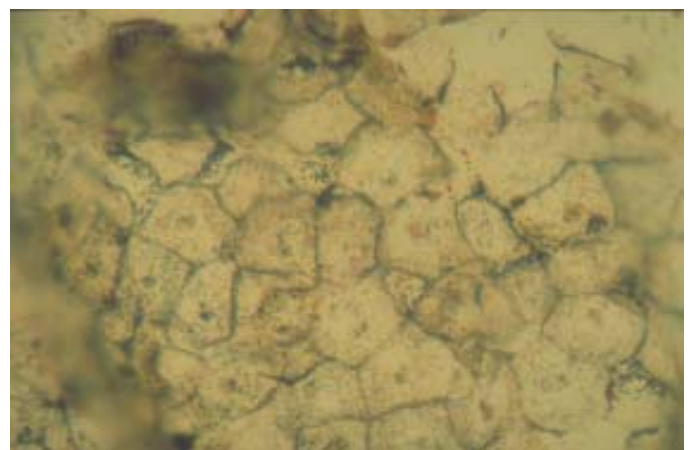
27. Edge of lesion of psoriasis stained by haematoxylin and eosin showing nuclei in parakeratotic scales



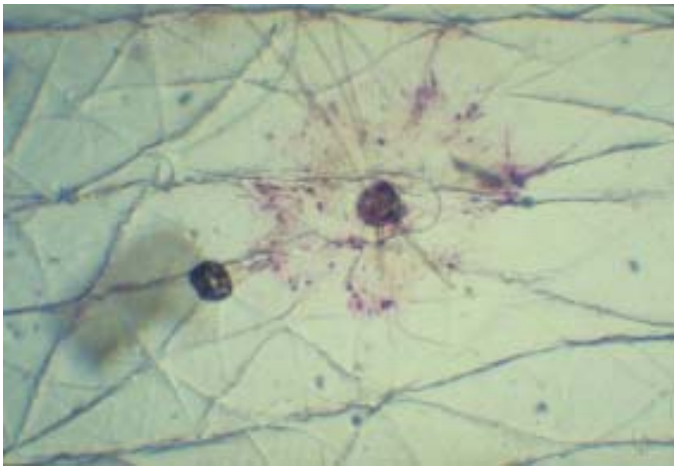
28. Normal forearm skin with normal surface markings



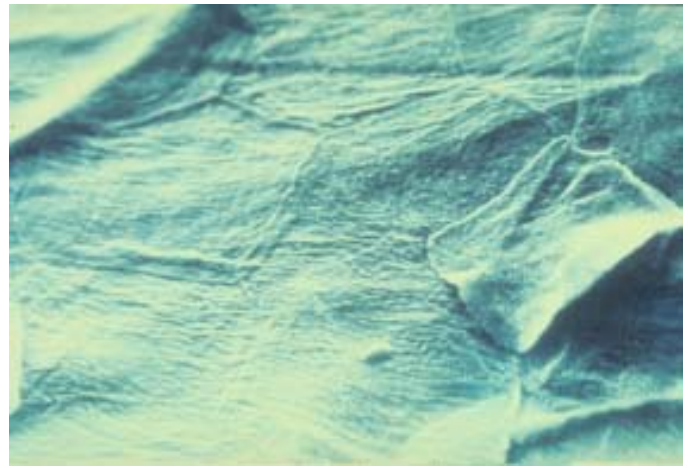
29. Normal forearm showing the typical rhomboidal pattern of skin surface markings



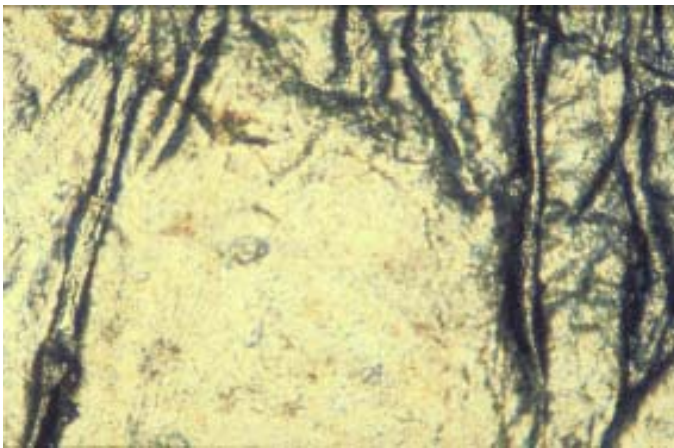
30. Particles of melanin in corneocytes stained with silver nitrate



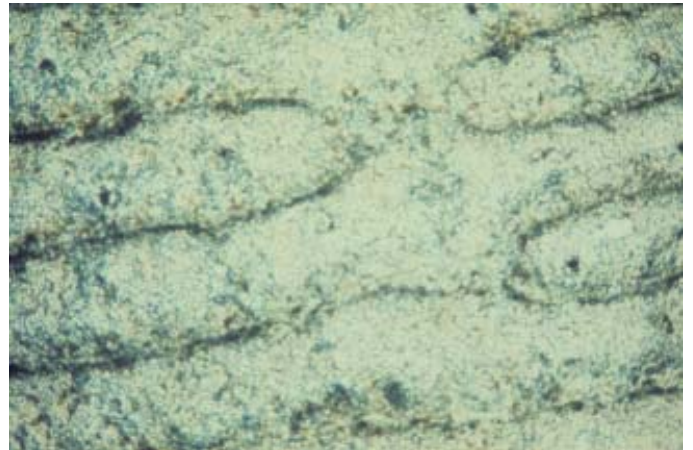
31. Pityriasis versicolor on chest stained with periodic schiff reagent showing PAS positive material composed of pseudohyphae and spores around a hair follicle



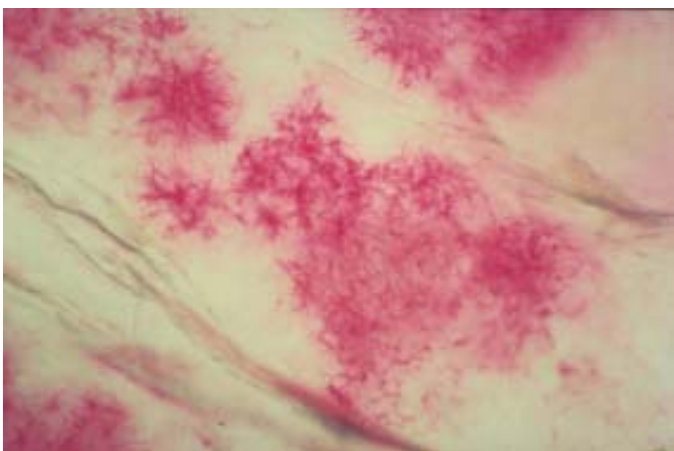
32. Scanning electron micrograph showing detached corneocytes



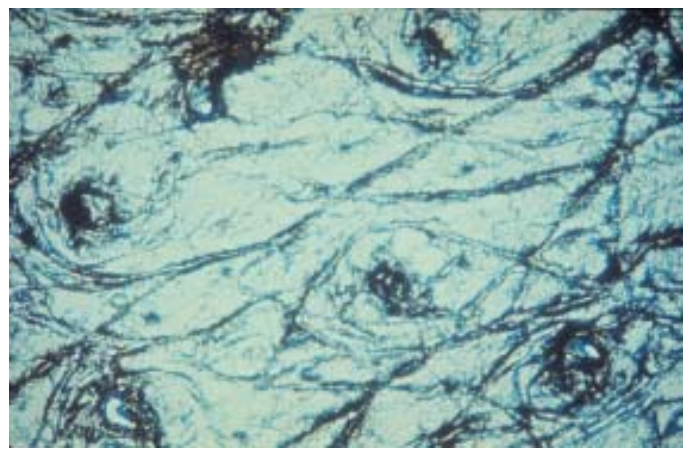
33. Plane wart with loss of skin markings over the lesion



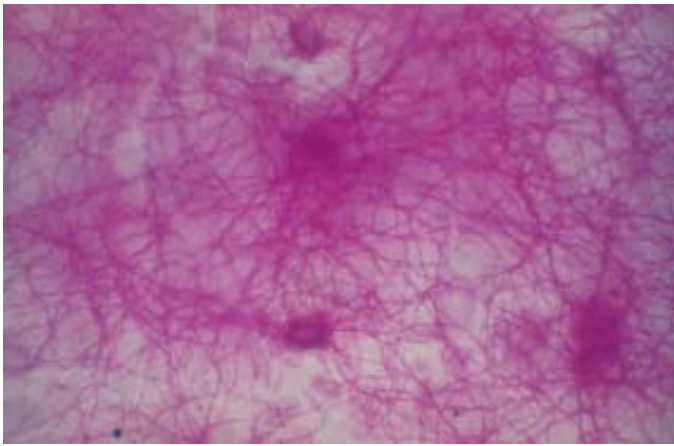
34. Palm with distinctive skin surface markings of parallel furrows



35. Axilla infected by erythrasma stained with periodic acid schiff reagent showing several "micocolonies" of PAS positive material composed of erythrasma micro-organisms



36. Chin of man with large follicular orifices typical of male beard follicles



37. **Tinea incognito in groin area in someone treated mistakenly with topical corticosteroids. the sample has been stained with periodic acid schiff agent and shows a mass of PAS positive fungal hyphae**



38. **Scanning electron micrograph taken from a lesion of ringworm showing a portion of ringworm hyphae**

We thank Prof. Pierard, University of Liège, Dermatological Department for the images 1-20 and Prof Marks, Cutest Cardiff for the images 21-38.